



ONBOARD POWER SUPPLY SIMULATION

VEHICLE ELECTRONIC SIMULATOR

Fully compliant emission and immunity tests

SPS TestManager / SPS SystemControl for fully software-guided test course

12V-24V

ISO 16750-2
LV 124
BMW GS 95003-2
BMW GS 95024-2-2
FCA CS.00054
Fiat 9.90111-01
GMW 3172
Honda 1901Z-XP7F
MBN 10567
Mitsubishi ES-X 82115
Nissan 28401NDS02
PSA B21 7110
Renault 36-00-808-M
Volvo 31822854
VW 80000

Ford JLR

Ford FMC1278
JLR EMC.CS Am. 4

Magnetic Field

ISO 11452-8
various manufacturer specifications

48V

ISO 21848
LV 148
VDA 320
BMW GS 95026
VW 82148

Burst and Surge

ISO 7637-2
ISO 7637-3
SAE J 1113-11
BMW GS 95002
FCA CS.00054
Fiat 9.90111-01
GMW 3097
MAN M 3285
Mitsubishi ES-X 82114
Nissan 28401NDS02
PSA B21 7110
Renault 36-00-808-M
Volvo 31850329
VW TL81000

VEHICLE ELECTRONIC SIMULATOR

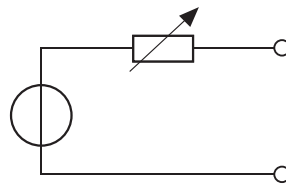
Fully compliant emission and immunity tests

POWER AMPLIFIER

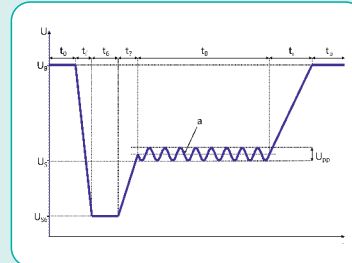
Battery simulation

according to
ISO 16750-2, LV 124 and OEM

High stability and signal bandwidth
Programmable internal resistance
Very high peak-load ability



LVA 2500

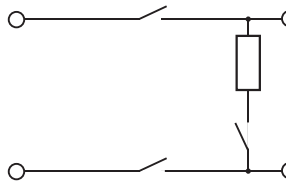


ELECTRONIC μ s-SWITCH

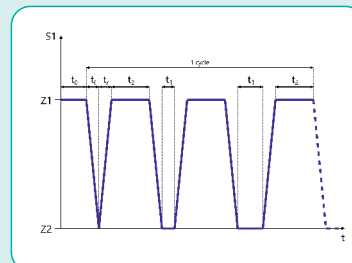
Simulation of brief interruptions

according to
ISO 16750-2, LV 124 and OEM

Extremely fast electronic switch
for signal and power lines
Trigger input and output



EMS 100

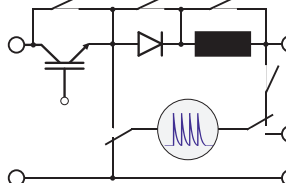


BURST AND SURGE

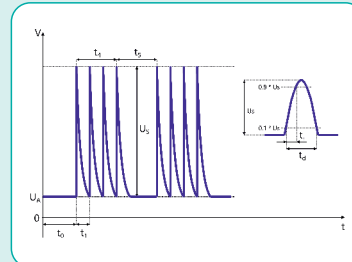
Burst and surge pulses

according to
ISO 7637-2/-3 and OEM

Arbitrary surge pulse parameters
Frequency sweep for burst pulses
Predefined waveforms



BSG 200

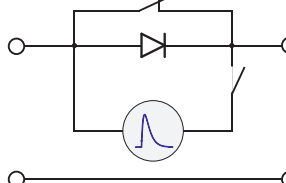


LOAD DUMP SIMULATION

Load dump pulses

according to
ISO 16750-2 and OEM

Arbitrary pulse parameters
Predefined pulse profiles



LDS 100

