

GA7396 Signal Generator Module

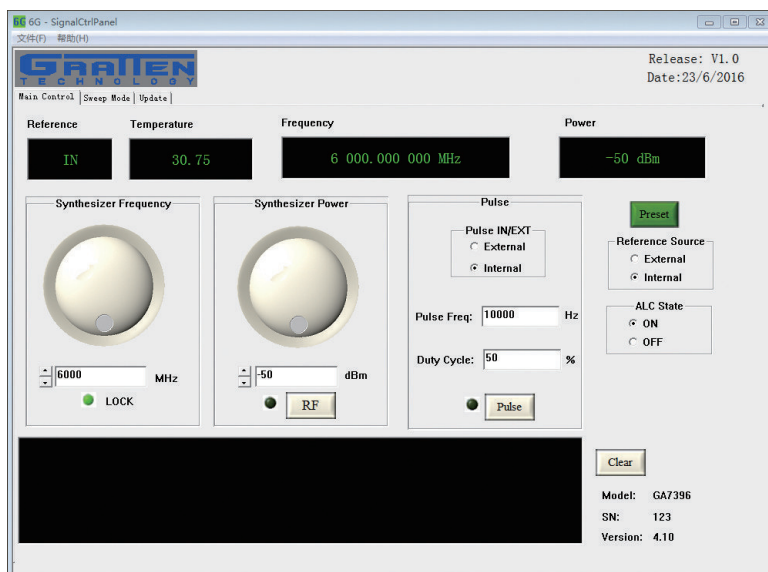


Summary

Modular instrument, in the technical performance, more flexible, economical and convenient; more able to adapt to the measurement technology and measuring instruments requirements; can be widely used in radio, communications, radar and its automatic test system, also applies to components, receivers and other electronic products production test areas.

Main features

- High cost performance
- Simple and quick operation interface
- USB interface control
- Frequency, amplitude scan function
- Excellent SSB $<-90\text{dBc} / \text{Hz} @ 1\text{kHz}$
 $\text{SSB } <-102\text{dBc} / \text{Hz} @ 1\text{kHz}$
 (Carrier frequency 6GHz, 0dBm)



Technical Parameters

Frequency features		Test environment
Frequency Range	10MHz-6GHz	
Resolution	6Hz	
Internal reference vibration Oscillator	Frequency	100MHz
	Aging Rate	$\leq \pm 1$ ppm/year
	Temperature	$< \pm 0.5$ ppm (0~50 C)
External reference input	Frequency	10MHz
	Level	0.5~2Vrms
	Impedence	50 Ω (Nominal Value, SMA connector)
Internal reference output	Frequency	10MHz
	Level	-1 ± 3 dBm
	Impedence	50 Ω (Nominal Value, SMA connector)
Amplitude Features		Test environment
Power	-50~+13dBm	
Resolution	0.01dB	
Error	$< \pm 0.8$ dB	20 $^{\circ}$ C~30 $^{\circ}$ C, ALC ON
	$< \pm 1.5$ dB	20 $^{\circ}$ C~30 $^{\circ}$ C, ALC OFF
Impedence	50 Ω (Nominal Value, SMA female connector)	
Phase noise	≤ 1.8	
Spectral purity		Test environment
Harmonic	< -35 dBc	< 0 dBm@4GHz
Non-harmonic	< -45 dBc	except subharmonic
Noise sideband	≤ -85 dBc/Hz (Typical Value -90dBc/Hz)	Carrier frequency 6GHz@1 kHz
Power switching speed	< 50 ms	ALC ON, Frequency amplitude switched at same time
	< 20 ms	ALC ON, Frequency unchanged, amplitude switching
	< 8 ms	ALC OFF, Frequency amplitude switched at same time
	< 8 ms	ALC OFF, Frequency unchanged, amplitude switching
Pulse modulation Features		Test environment
Breaking ratio	> 60 dB	
Rise / fall time	< 60 ns	
Pulse period	1 μ s~2 s	
Pulse Width	100ns~1 s	
Time resolution	20ns	
General features		Test environment
Interface	USB, SPI	
Power Voltage	12V (DC)	
Power Consumption	< 18 W	